

Figure 1, 2 e 3



Abitato per civili abitazioni a via piaveca
num. 6
prospetto principale (in prospettiva)
prospetto architetto stabilisce filo speciale
leggera luce e suono

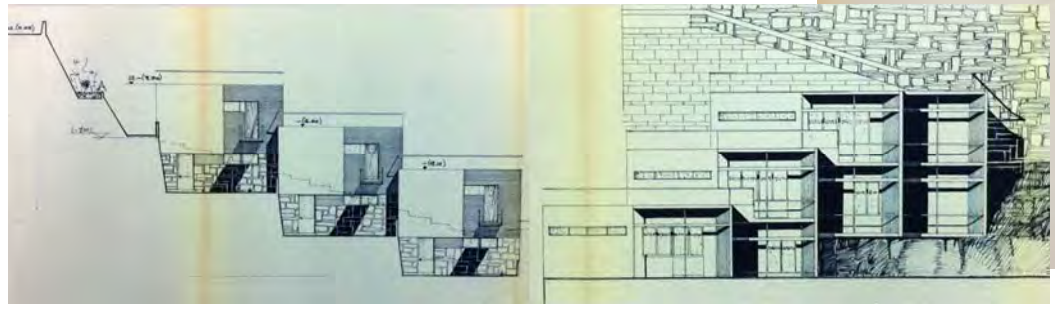
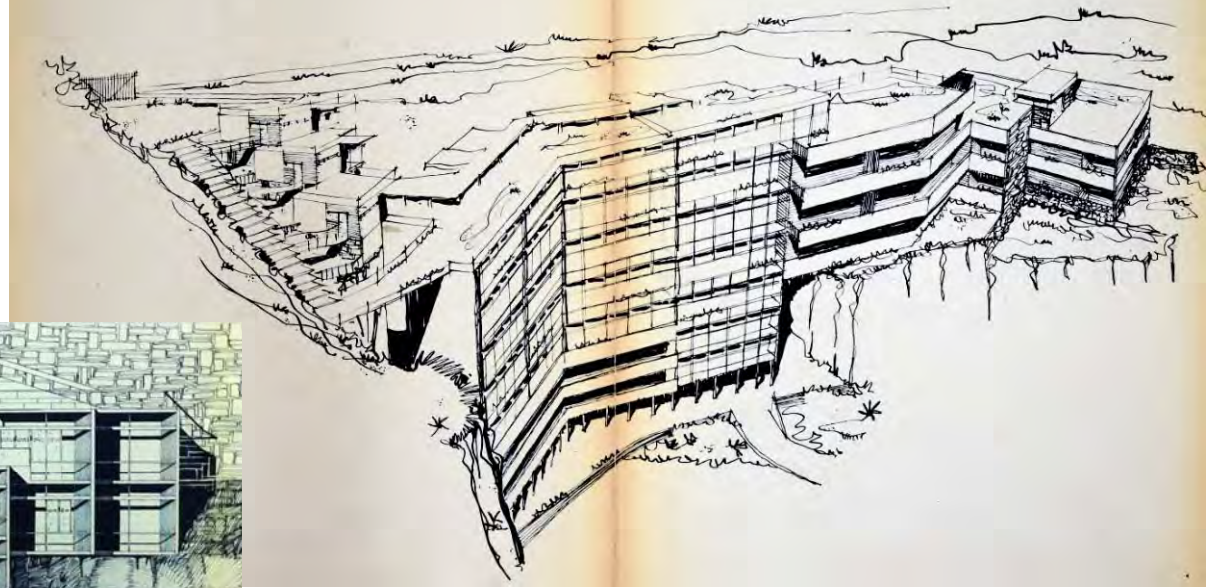
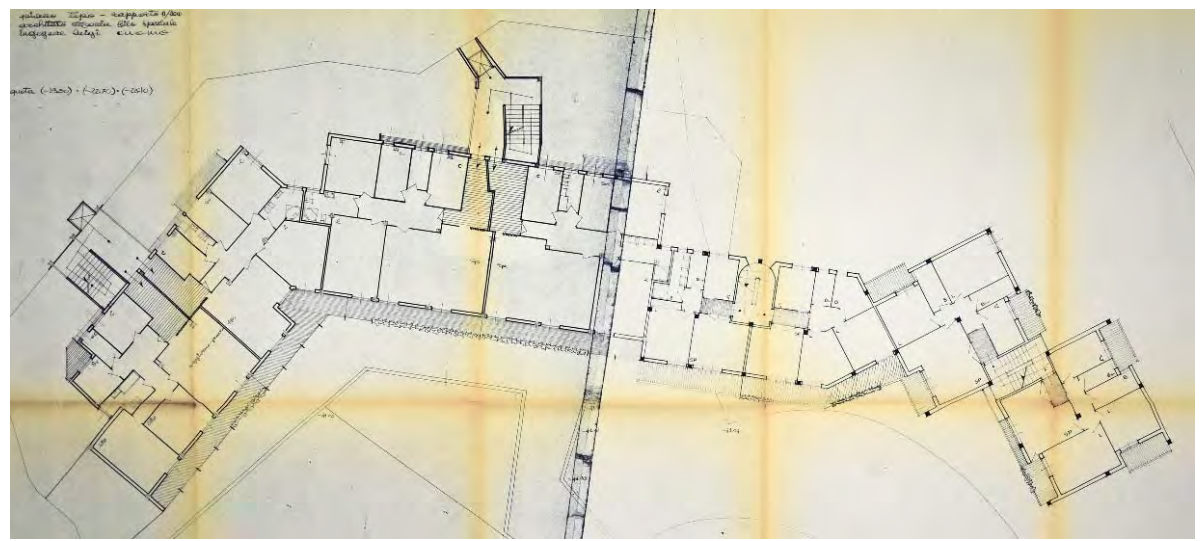


Figure 4, 5 e 6



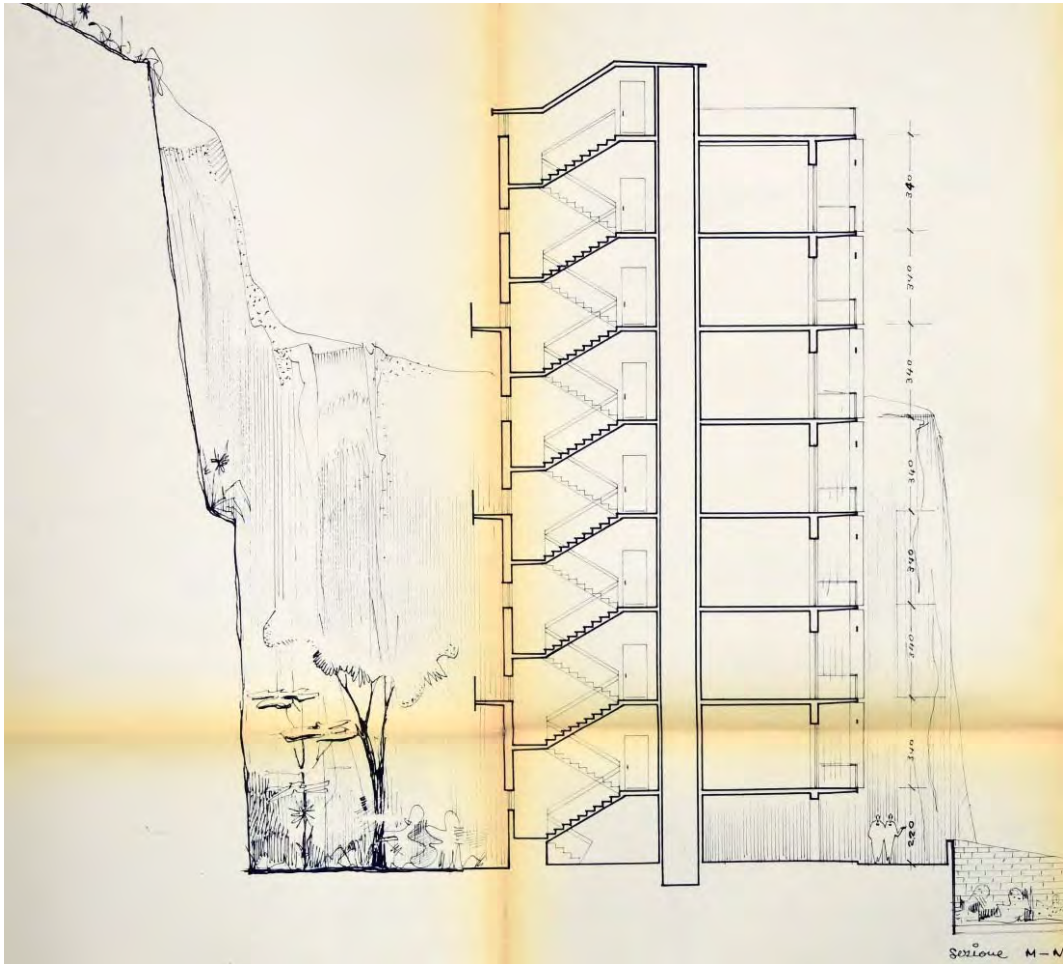


Figure 7 e 8

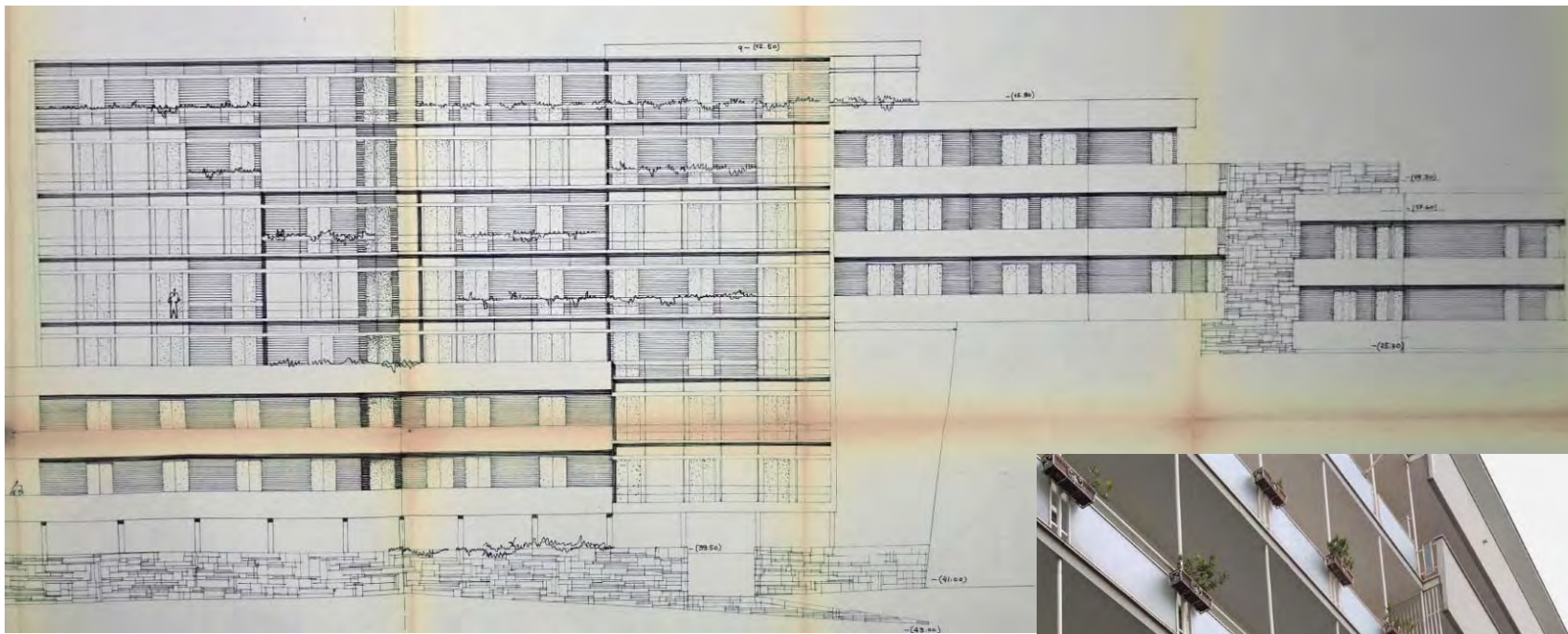


Figure 9, 10 e 11

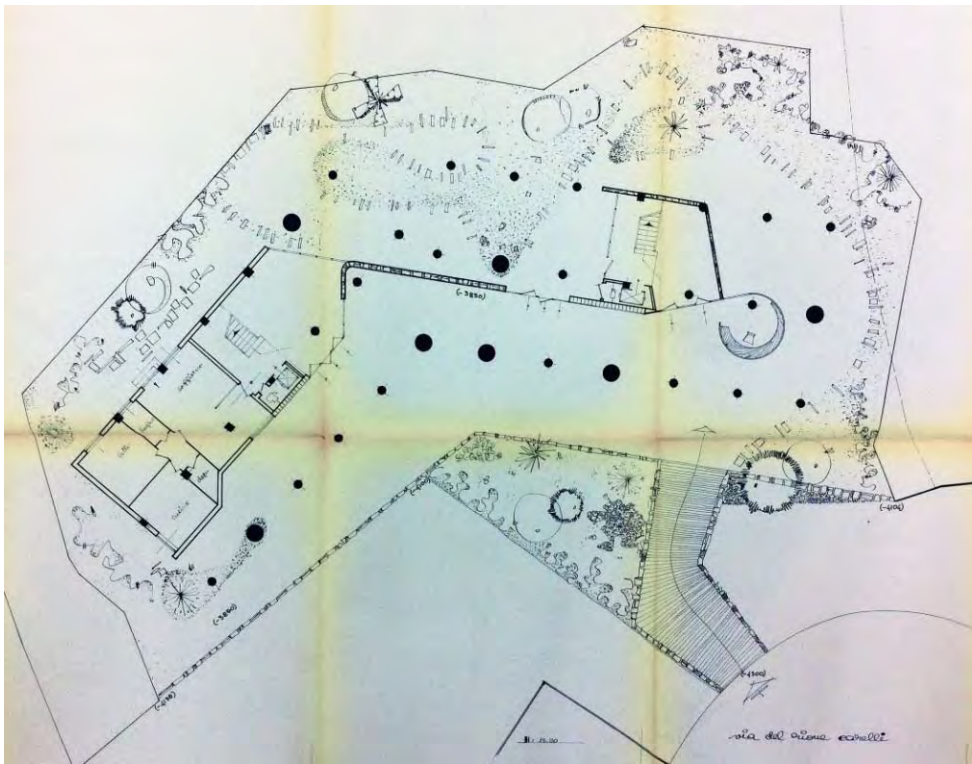


Figure 12, 13 e 14





Figure 15 e 16





Figure 17, 18 e 19



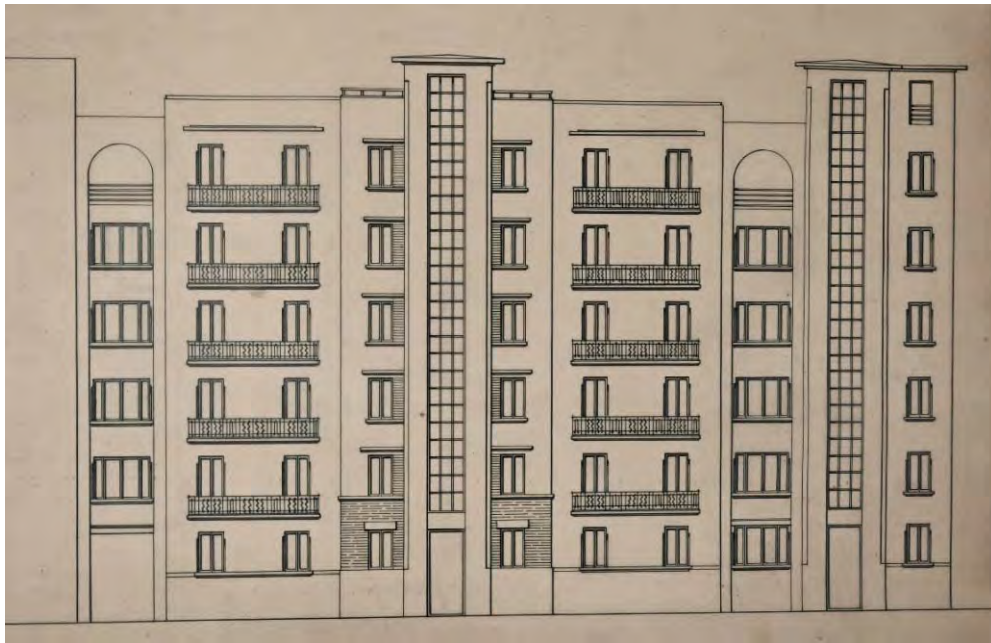
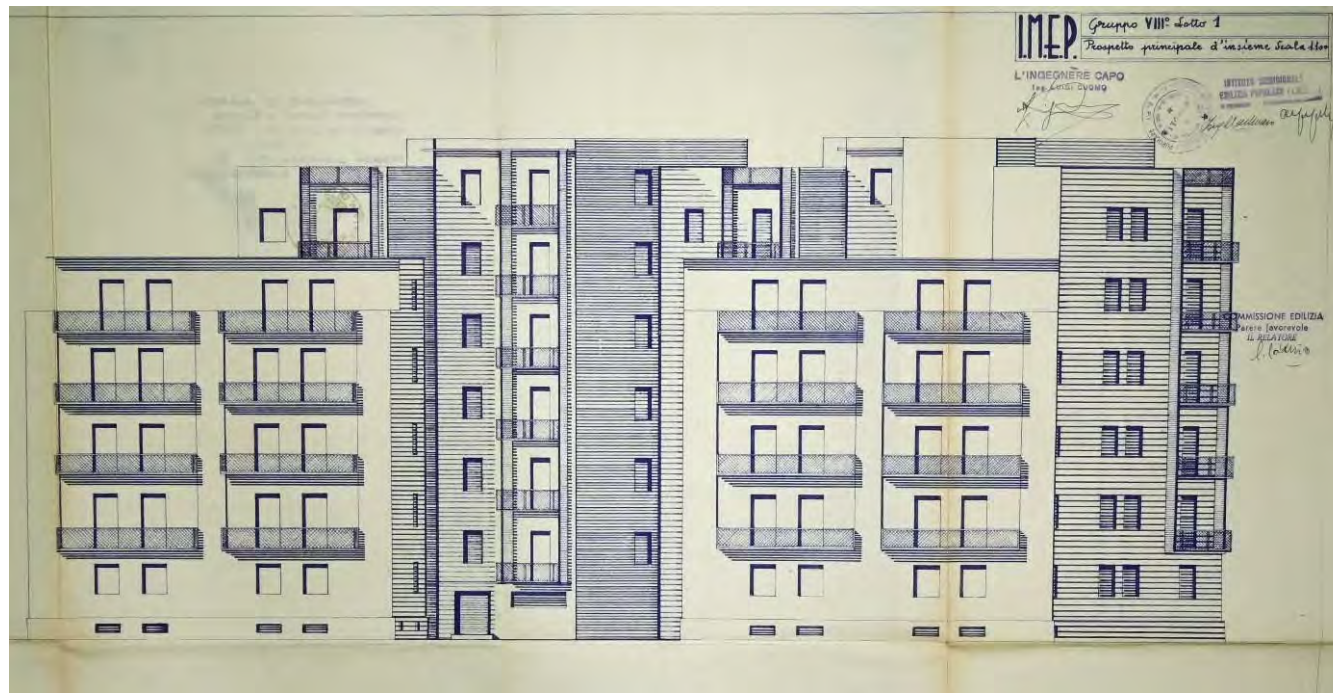


Figure 20, 21 e 22



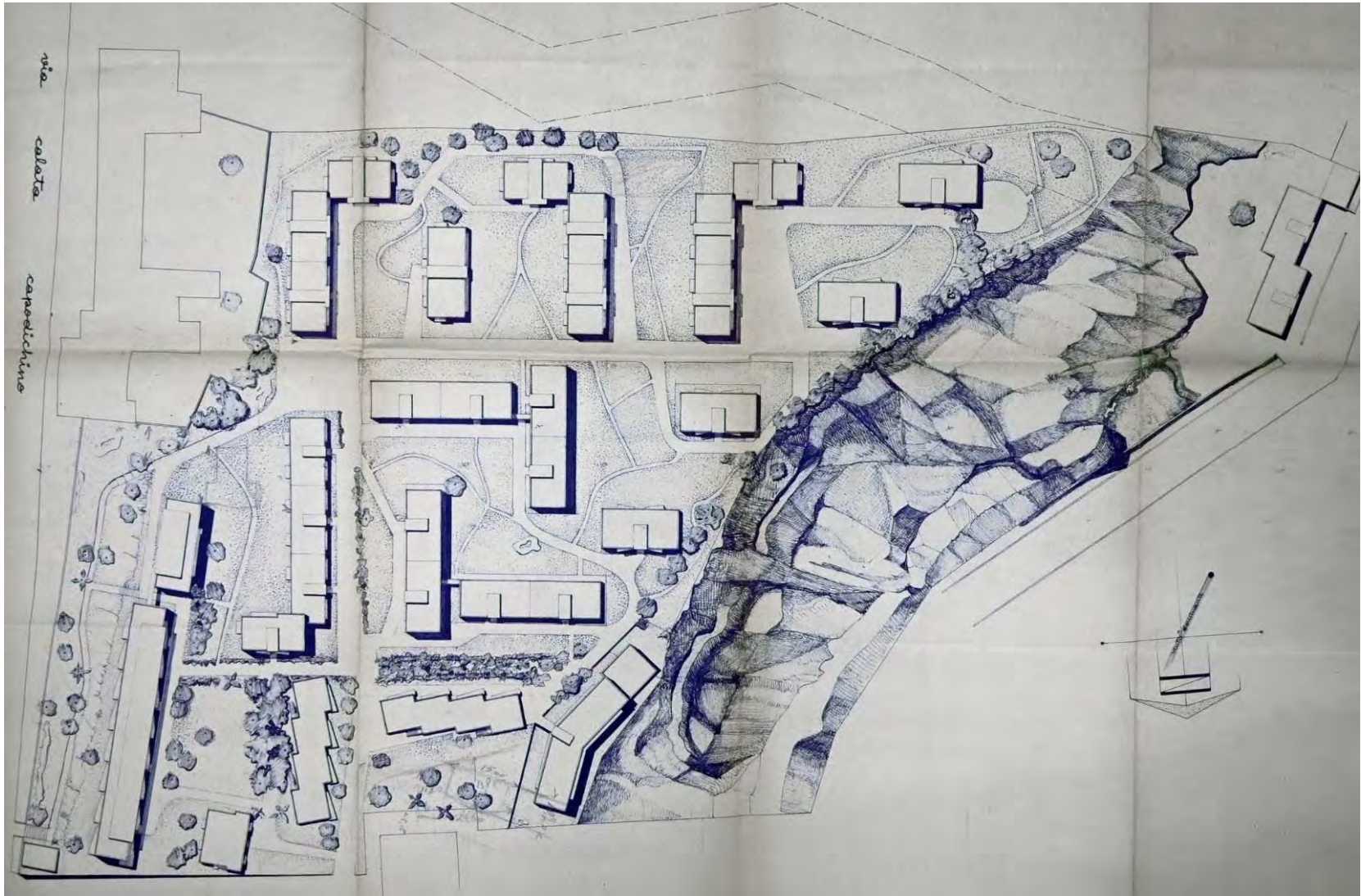


Figura 23

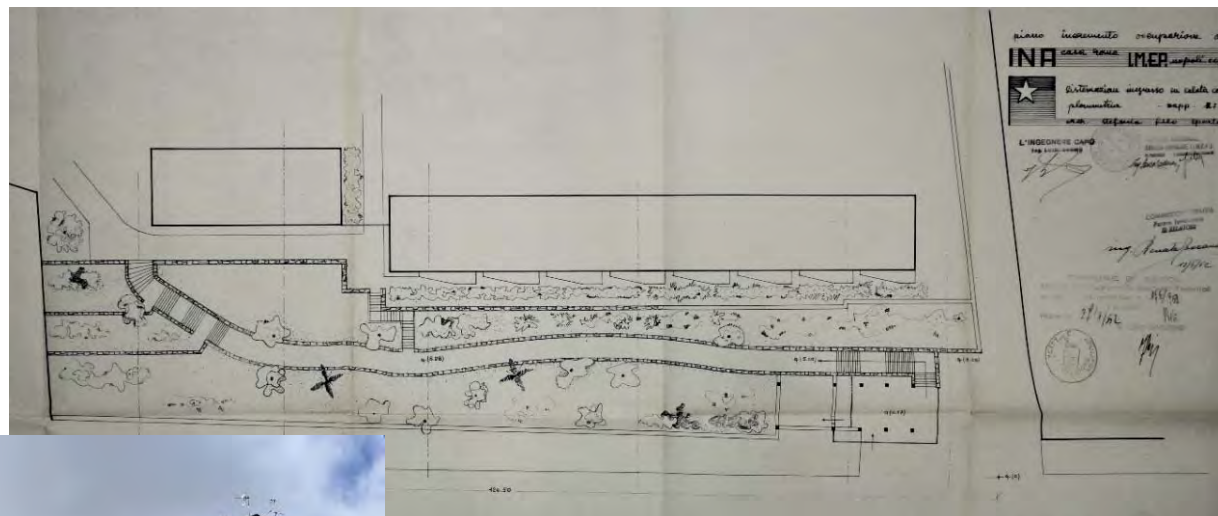


Figure 24, 25, 26 e 27

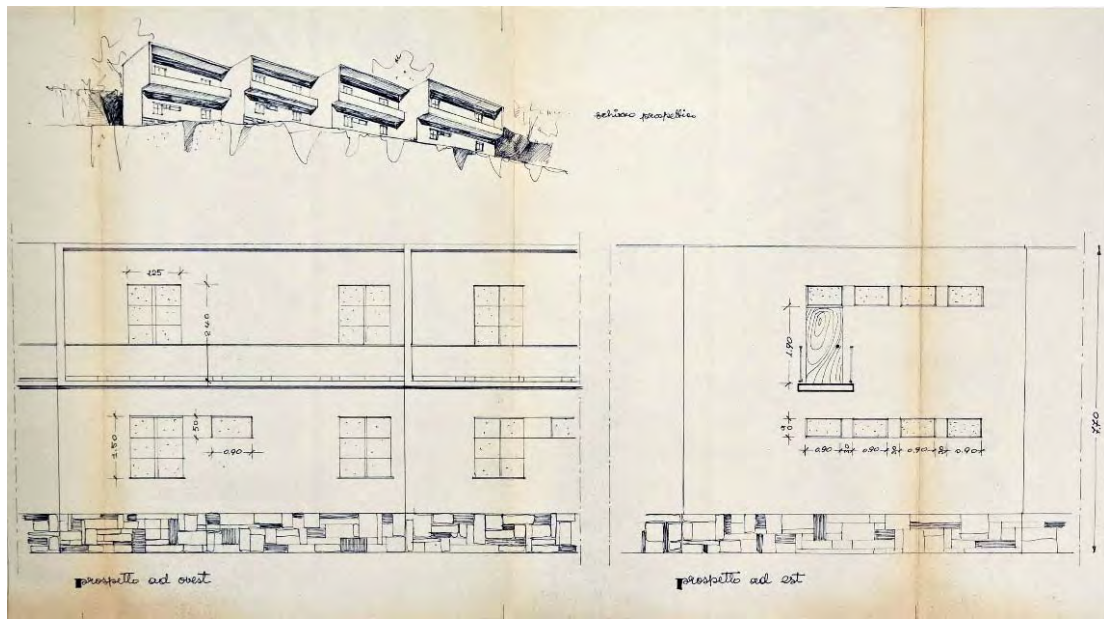


Figure 28, 29 e 30

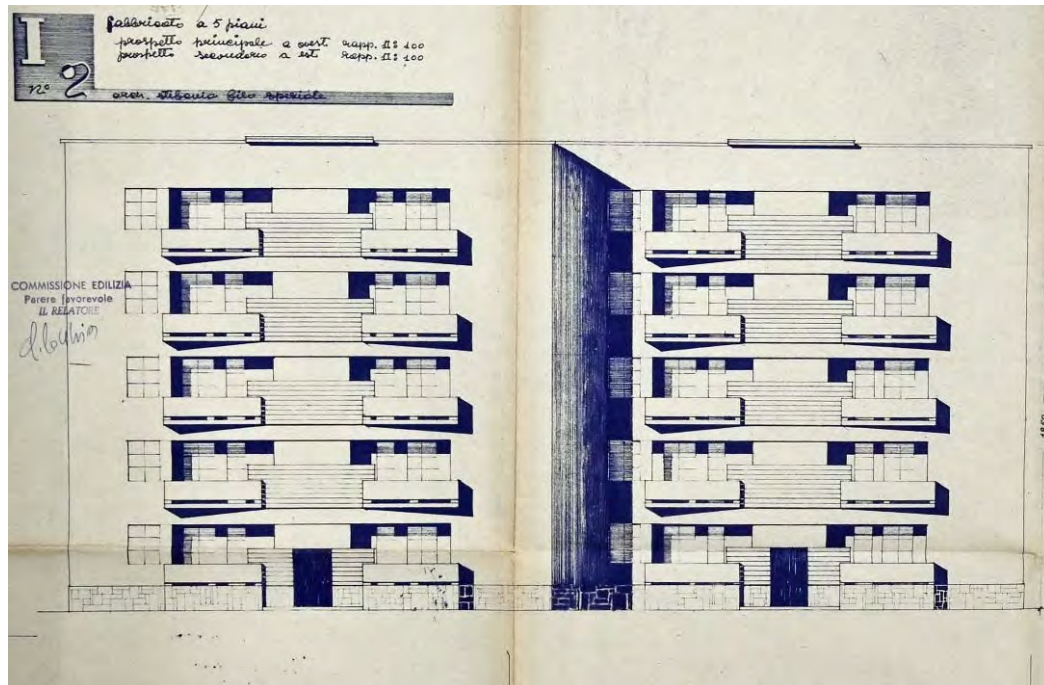




Figure 31, 32 e 33



Figure 34 e 35

